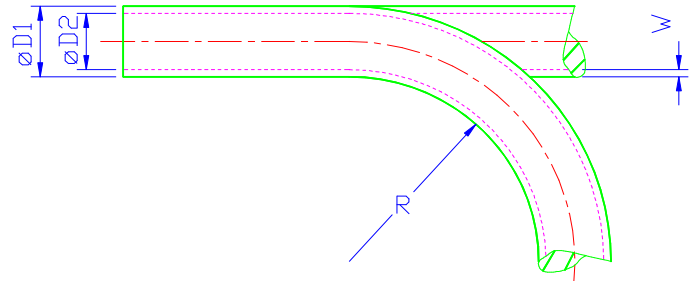


Abmessung Size 8 x 5,5 mm Material Polyether PUR

„ausgezeichnete Hydrolyseeigenschaften und beständig gegen Mikroben *hydrolisisproof and resistant against microbes*“

Maße Measures:

D ₁ (mm)	D ₂ (mm)	W (mm)
8,00	5,5	1,25
Zulässiger kleinster Biegeradius <i>Minimum bend radius R</i>		Gewicht <i>weight:</i>
25 mm		30,75 g/ m <small>(errechnet value calculated)</small>

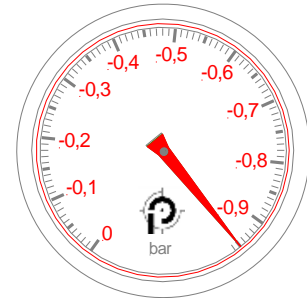


Mindestberstdruck *Minimum burst pressure (bar)*
bei 20°C/ at 20°C:



(Werte nach Werksnorm ermittelt values according to our examination standard)





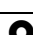
Maximales Vakuum *Maximum vacuum (bar)*
bei 20°C/ at 20°C:



(Werte nach Werksnorm ermittelt values according to our examination standard)

Bei der Verlegung zum Einsatz mit Vakuum erhöht sich der o. a. Mindestbiegeradius um ca. 20%.
For use with vacuum minimum bend radius as indicated has to be extended about appx. 20%.

Schlauchfarben/ Tube colours:

natur/ transparent		rot transluzent <i>red translucent</i>	
Blau-transluzent <i>translucent blue</i>		gelb transluzent <i>yellow translucent</i>	
schwarz transluzent <i>Translucent black</i>		grün transluzent <i>green translucent</i>	