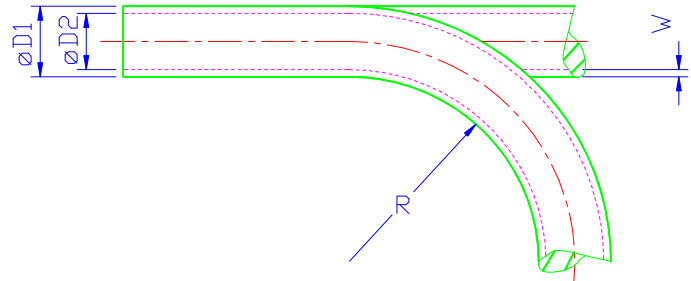


## Abmessung Size 4 x 2,5 mm Material Polyether PUR

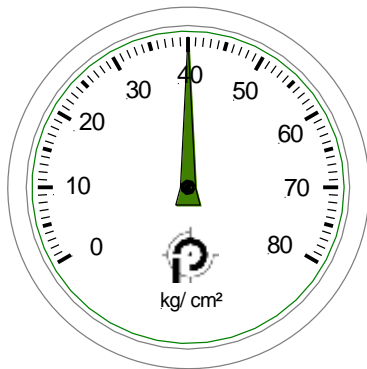
„ausgezeichnete Hydrolyseeigenschaften und beständig gegen Mikroben *hydrolysisproof and resistant against microbes*“

Maße Measures:

D <sub>1</sub> (mm)	D <sub>2</sub> (mm)	W (mm)
<b>4,00</b>	<b>2,5</b>	<b>0,75</b>
Zulässiger kleinster Biegeradius <i>Minimum bend radius R</i>		Gewicht <i>weight:</i>
<b>12 mm</b>		<b>8,88 g/ m</b> <small>(errechnet value calculated)</small>

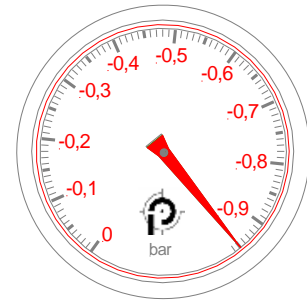


Mindestberstdruck *Minimum burst pressure (bar)*  
bei 20°C/ at 20°C:



(Werte nach Werksnorm ermittelt values according to our examination standard)






Maximales Vakuum *Maximum vacuum (bar)*  
bei 20°C/ at 20°C:



(Werte nach Werksnorm ermittelt values according to our examination standard)

Bei der Verlegung zum Einsatz mit Vakuum erhöht sich der o. a. Mindestbiegeradius um ca. 20%.  
*For use with vacuum minimum bend radius as indicated has to be extended about appx. 20%.*

Schlauchfarben/ Tube colours:

natur/ transparent		rot transluzent <i>red translucent</i>	
Blau-transluzent <i>translucent blue</i>		gelb transluzent <i>yellow translucent</i>	
schwarz transluzent <i>Translucent black</i>		grün transluzent <i>green translucent</i>	