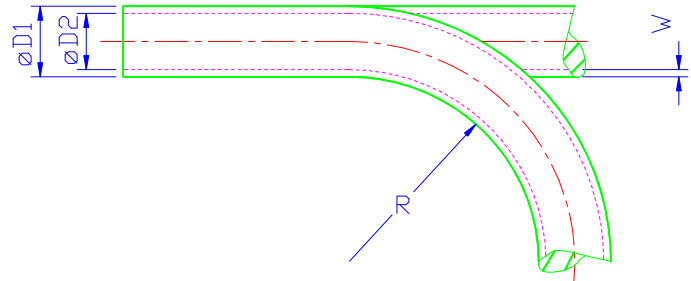


Abmessung *Size* 12 x 8 mm Material Polyether PUR

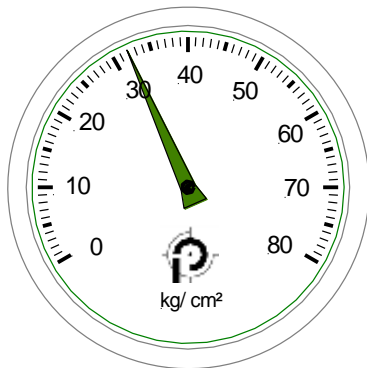
„ausgezeichnete Hydrolyseeigenschaften und beständig gegen Mikroben“ *hydrolysisproof and resistant against microbes*

Maße *Measures*:

D1 (mm)	D2 (mm)	W (mm)
12,0	8,0	2,0
Zulässiger kleinster Biegeradius <i>Minimum bend radius R</i>		Gewicht <i>weight:</i>
35 mm		72,88 g/ m <small>(errechnet <i>value calculated</i>)</small>

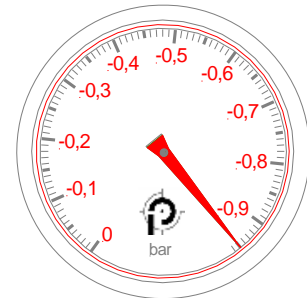


Mindestberstdruck *Minimum burst pressure (bar)*
bei 20°C/ at 20°C:



(Werte nach Werksnorm ermittelt *values according to our examination standard*)

Maximales Vakuum *Maximum vacuum (bar)*
bei 20°C/ at 20°C:








(Werte nach Werksnorm ermittelt *values according to our examination standard*)

Bei der Verlegung zum Einsatz mit Vakuum erhöht sich der o. a. Mindestbiegeradius um ca. 20%.

For use with vacuum minimum bend radius as indicated has to be extended about appx. 20%.

Schlauchfarben/ *Tube colours*:

natur/ <i>transparent</i>		rot transluzent <i>red translucent</i>	
Blau-transluzent <i>translucent blue</i>		gelb transluzent <i>yellow translucent</i>	
schwarz transluzent <i>Translucent black</i>		grün transluzent <i>green translucent</i>	