

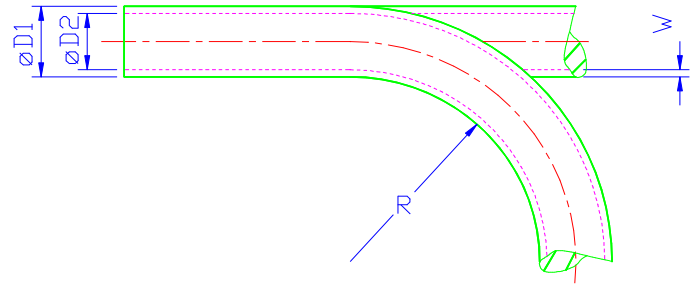
## Abmessung Size 4,3 x 2,85 mm

### Material Polyester PUR

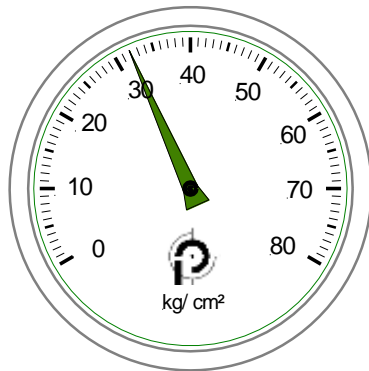
„ausgezeichnete mechanische Eigenschaften *excellent mechanical properties*“

Maße Measures:

D <sub>1</sub> (mm)	D <sub>2</sub> (mm)	W (mm)
<b>4,30</b>	<b>2,85</b>	<b>0,725</b>
Zulässiger kleinster Biegeradius <i>Minimum bend radius R</i>		Gewicht <i>weight:</i>
<b>13 mm</b>		<b>9,93 g/ m</b> <small>(errechnet <i>value calculated</i>)</small>

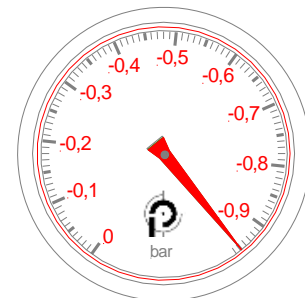


Mindestberstdruck *Minimum burst pressure (bar)*  
bei 20 °C/ at 20 °C:



(Werte nach Werksnorm ermittelt *values according to our examination standard*)

Maximales Vakuum *Maximum vacuum (bar)*  
bei 20 °C/ at 20 °C:





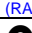








(Werte nach Werksnorm ermittelt *values according to our examination standard*)

Bei der Verlegung zum Einsatz mit Vakuum erhöht sich der o. a. Mindestbiegeradius um ca. 20%.

*For use with vacuum minimum bend radius as indicated has to be extended about appx. 20%.*

### Schlauchfarben/ Tube colours:

natur (opak) <i>opaque</i>		grün <i>green</i>	
blau <i>blue</i>	 (RAL-Nr. 5015)	grau <i>grey</i>	 (RAL-Nr. 7005)
schwarz <i>black</i>	 (RAL-Nr. 9005)	silbergrau <i>silver-grey</i>	 (RAL-Nr. 7001)
rot <i>red</i>	 (RAL-Nr. 3002)	braun <i>brown</i>	
gelb 1 <i>yellow 1</i>	 (RAL-Nr. 1023)	violett <i>violet</i>	
gelb 2 <i>yellow 2</i>		orange <i>orange</i>	