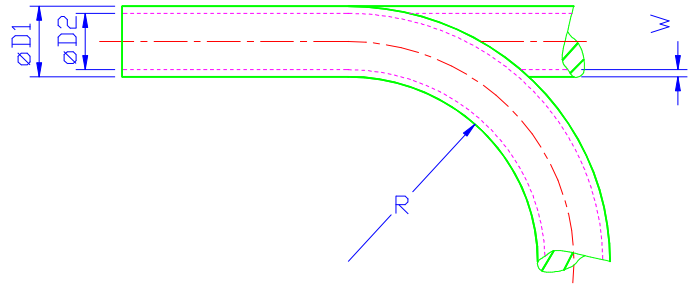


Abmessung Size 10 x 7,5 mm Material Polyester PUR

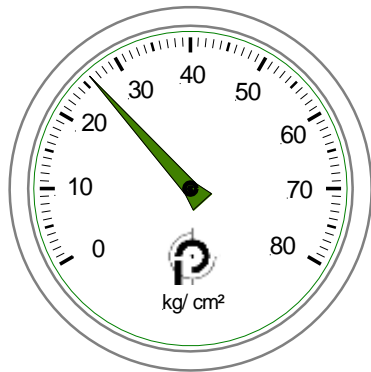
„ausgezeichnete mechanische Eigenschaften excellent mechanical properties“

Maße Measures:

D ₁ (mm)	D ₂ (mm)	W (mm)
10,00	7,50	1,25
Zulässiger kleinster Biegeradius <i>Minimum bend radius R</i>		Gewicht <i>weight:</i>
45 mm		41,92 g/ m <small>(errechnet value calculated)</small>

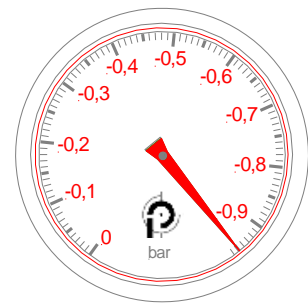


Mindestberstdruck *Minimum burst pressure (bar)*
bei 20°C/ at 20°C:



(Werte nach Werksnorm ermittelt values according to our examination standard)

Maximales Vakuum *Maximum vacuum (bar)*
bei 20°C/ at 20°C:



(Werte nach Werksnorm ermittelt values according to our examination standard)

Bei der Verlegung zum Einsatz mit Vakuum erhöht sich der o. a. Mindestbiegeradius um ca. 20%.

For use with vacuum minimum bend radius as indicated has to be extended about appx. 20%.

Schlauchfarben/ Tube colours:

natur (opak) <i>opaque</i>	⊙	grün <i>green</i>	●
blau <i>blue</i>	● (RAL-Nr. 5015)	grau <i>grey</i>	● (RAL-Nr. 7005)
schwarz <i>black</i>	● (RAL-Nr. 9005)	silbergrau <i>silver-grey</i>	● (RAL-Nr. 7001)
rot <i>red</i>	● (RAL-Nr. 3002)	braun <i>brown</i>	●
gelb 1 <i>yellow 1</i>	● (RAL-Nr. 1023)	violett <i>violet</i>	●
gelb 2 <i>yellow 2</i>	●	orange <i>orange</i>	●